



PROJECTS

HYDROGEOLOGY

HydroSOLUTIONS

HydroSol Hydro49

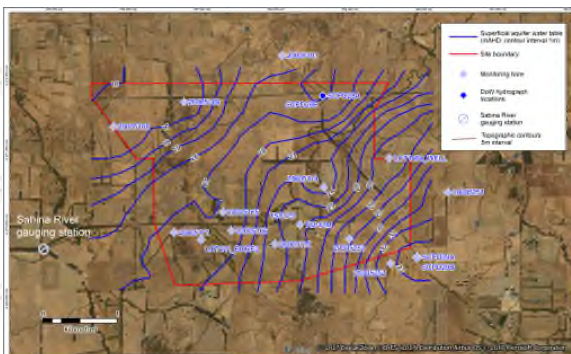


Doral Mineral Sands,
Initial Hydrogeological Review of the
Yalyallup proposed mineral sand mine

Doral proposes to mine Heavy Mineral Sands within the Yoganup Formation and overlying Bassendean Sand at Yalyallup. The superficial sequence will need to be dewatered to allow dry working.

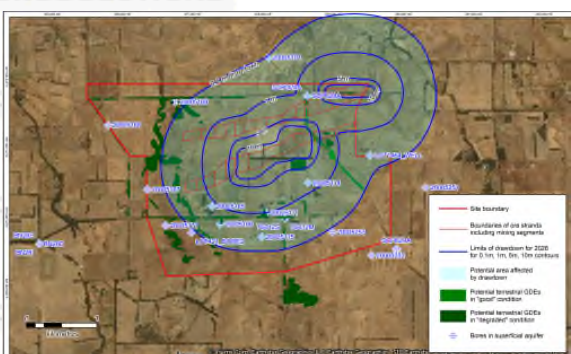


An initial hydrogeological review was undertaken to assess the site environment and the potential impacts from the development. The surface water hydrology of the area was reviewed; the site is located within the Sabina River catchment, which flows into the sensitive Vasse-Wonnerup wetlands at the coast. Run-off from the site area and groundwater baseflow contribution to surface water flow and quality was estimated



Unconfined groundwater is present at shallow depth within the superficial aquifer. Groundwater within the underlying regional Leederville aquifer is confined beneath a thick clay sequence at the site.

There are a number of local groundwater users for agricultural purposes near to the site. In addition there are numerous groundwater dependent ecosystems (GDEs) that could potentially be affected by the dewatering.



Analytical modelling was undertaken to assess dewatering requirements and the extent of water table drawdown.

Potential effects were assessed and where needed possible mitigation measures were proposed to offset any likely impacts identified.

HydroSolutions Pty Ltd
38 Sheldrake Way
Willetton
Western Australia 6155
Tel: (+61 8) 9457 5448
Fax: (+61 8) 9457 4293
Mob: 0403 021533

E-mail: stuart.jeffries@hydrosolutions.com.au
Website: www.hydrosolutions.com.au

HydroSOLUTIONS